



POSITION DESCRIPTION

ROLE TITLE

Financial Analyst – Kalama, WA or West Sacramento, CA

DEPARTMENT

Accounting

BUSINESS SUMMARY

NS BlueScope Coated Products is a joint venture between Nippon Steel & Sumitomo Metals Corporation and BlueScope Steel. The Coated Product business operates in the United States, Malaysia, Vietnam, Thailand and Indonesia, with its headquarters based in Singapore. This joint venture provides a strong platform to capture growth in new market segments. ASC Profiles LLC and Steelscape LLC are part of the NS BlueScope Coated Products business in the United States.

ASC Profiles LLC is the leading manufacturer of steel roof and wall products and structural roof and floor deck in the Western U.S., servicing customers from eight locations. ASC Profiles services various segments of the steel construction industry through its three divisions, AEP Span, ASC Steel Deck and ASC Building Products.

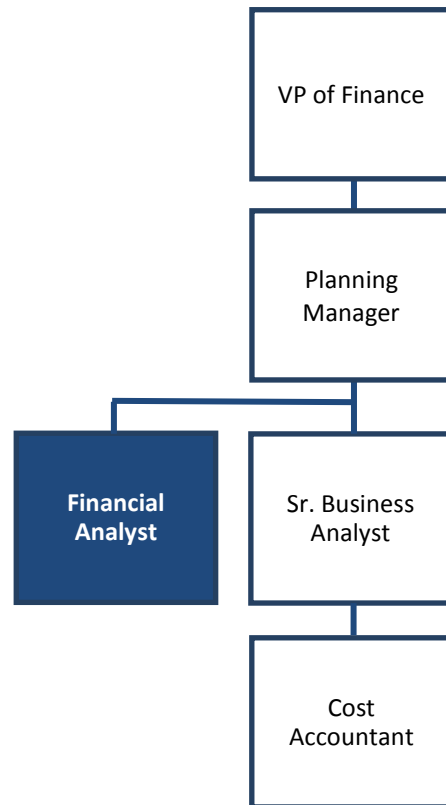
Steelscape, LLC is a national supplier of metallic-coated and pre-painted steel. Aimed at servicing the construction industry, Steelscape's products can be used for a wide range of applications from metal buildings to architectural roofing to decking and framing. Steelscape's facilities, located in Kalama, Washington; and Rancho Cucamonga, California are strategically located near major truck, ship and rail routes to best serve the Western U.S. market

FUNCTION SUMMARY

- Performs timely and accurate plant journal entries.
- Performs timely account reconciliations analysis on a monthly basis.
- Manages key performance indicator (KPI) database and prepares month end reports.
- Creates and maintains operational performance reports, which includes Product Cost Trend Report
- Accurately tracks operational cost savings results.
- Manages product costing and inventory valuation, as well as job costing for multiple plants.
- Leads quarterly standard cost updates
- Researches and communicates variances for actual, forecast, and budgeted results
- Performs financial analysis of capital expenditures.
- Provides timely budget data for SGA and plant expenses on an annual basis.
- Coordinates the annual physical inventories count for multiple plants.
- Provides information to internal and external auditors as needed.
- Prepares ad-hoc analysis and presents findings to the leadership team as requested.

POSITION DESCRIPTION

REPORTING STRUCTURE



KEY RELATIONSHIPS

- Critical to the success of this role is the ability to deliver outcomes through productive relationships with others. Important role relationships include:
 - VP of Finance
 - Finance, line and plant managers.
 - Commercial and accounting teams.
 - Finance peers.

REQUIRED EXPERIENCE AND COMPETENCIES

Experience and Qualifications

- A bachelor's degree in finance, accounting or a related area is required.
- 3+ years of experience in an accounting role, with emphasis on financial analysis, are required.
- 3+ years of experience in a cost accounting role are strongly preferred.
- Experience in a manufacturing environment is strongly preferred.
- Experience working with an ERP system is required. SAP experience is preferred.



POSITION DESCRIPTION

Key Competencies

- Attention to detail and a high level of accuracy
- Proficiency in the English language, with effective oral and written communication skills
- Excellent organizational skills
- Ability to analyze and solve problems effectively
- Strong presentation skills (Microsoft PowerPoint)
- Intermediate/advanced Microsoft Excel skills

Physical Demands

- The physical demands of this position are limited to those found in a normal office environment.
- While performing the duties of this job, the employee is constantly required to sit, use the hands to feel, handle and manipulate objects, talk, hear, type, look and see.
- The employee is frequently required to stand, walk, reach above the shoulder or outward, and bend.
- The employee is occasionally required to lift and carry, push and pull, stoop, squat, drive and kneel.

Work Environment

- The work environment is constrained to a standard office environment, with occasional functions in an unconditioned warehouse/manufacturing space.
- While performing the duties of this position, the employee is occasionally exposed to floor hazards and strain associated with sitting for long periods of time.
- The noise level in the work environment is usually low to moderate.

Special Requirements

- CPA license and/or MBA is a plus.
- This position may require periodic domestic travel (approximately 10%).

EEO Employer/M/F/Disabled/Protected Veteran

BlueScope is an equal opportunity employer. All qualified applicants will receive consideration for employment without regard to race, religion, color, national origin, sex, sexual orientation, gender identity, age, status, as a protected veteran, among other things, or status as a qualified individual with disability.

To apply please e-mail your resume to careers@bluescope.us